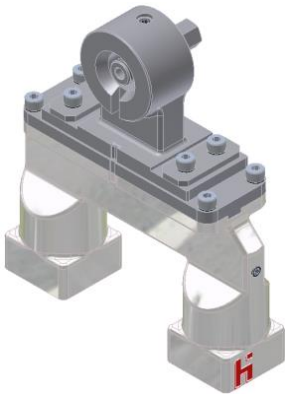


SECTION 12.

# TAKE OUT HEAD

## TAKEOUT - TONG HEAD X-Y ADJUSTABLE INSERT TYPE "ANTIWINK"



Tong head DG



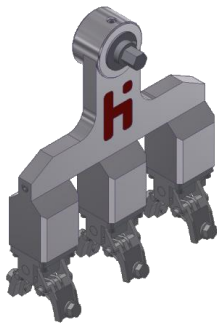
Insert



Additional Cooling DG

| Machine type        | Description                          | Material      | Part No.   |
|---------------------|--------------------------------------|---------------|------------|
| 4 ¼" SG & 5" SG     | Takeout Tong Head, with Insert       | Aluminum Cast | 2213250011 |
|                     | Takeout Tong Head, w/o Insert        |               | 2213252900 |
| 4 ¼" DG             | Takeout Tong Head, with Insert       | Aluminum Cast | 2213250008 |
|                     | Takeout Tong Head, w/o Insert        |               | 2213252500 |
| 5" DG               | Takeout Tong Head, with Insert       | Aluminum Cast | 2213250005 |
|                     | Takeout Tong Head, w/o Insert        |               | 2213252100 |
| 85mm TG             | Takeout Tong Head, with Insert       | Aluminum Cast | 2213250009 |
|                     | Takeout Tong Head, w/o Insert        |               | 2213252700 |
| 5 ½" DG             | Takeout Tong Head, with Insert       | Aluminum Cast | 2213250007 |
|                     | Takeout Tong Head, w/o Insert        |               | 2213252400 |
| 5 ½" SG & 6 ¼" SG   | Takeout Tong Head, with Insert       | Aluminum Cast | 2213250010 |
|                     | Takeout Tong Head, w/o Insert        |               | 2213252800 |
| 6 ¼" DG             | Takeout Tong Head, with Insert       | Aluminum Cast | 2213250006 |
|                     | Takeout Tong Head, w/o Insert        |               | 2213252200 |
| 4 ¼" TG             | Takeout Tong Head, with Insert       | Aluminum Cast | 2213250004 |
|                     | Takeout Tong Head, w/o Insert        |               | 2213252300 |
| 95mm QG             | Takeout Tong Head, with Insert       | Aluminum Cast | -          |
|                     | Takeout Tong Head, w/o Insert        |               | 2213252600 |
| All Sizes           | Takeout Insert, Type Antiwink        | -             | 2101136000 |
| 5 1/2" DG & 6 ¼" DG | Additional Cooling Takeout Tong Head | -             | 2213253000 |
| 4 ¼" TG             | Additional Cooling Takeout Tong Head | -             | 2213253100 |
| 4 ¼" DG & 5" DG     | Additional Cooling Takeout Tong Head | -             | 2213253200 |

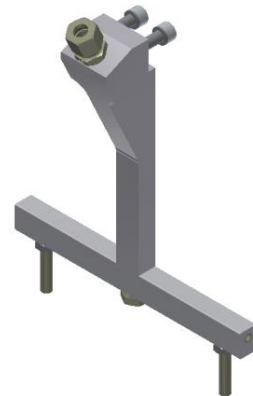
**TAKEOUT - TONG HEAD NON-ADJUSTABLE  
INSERT TYPE "ANTIWINK"**



Tong head TG



Insert



Additional Cooling DG

| Machine type        | Description                          | Material      | Part No.   |
|---------------------|--------------------------------------|---------------|------------|
| 4 ¼" SG & 5" SG     | Takeout Tong Head, with Insert       | Aluminum Cast | 2213250011 |
|                     | Takeout Tong Head, w/o Insert        |               | 2213252900 |
| 4 ¼" DG             | Takeout Tong Head, with Insert       | Aluminum Cast | 2213250031 |
|                     | Takeout Tong Head, w/o Insert        |               | 2213255100 |
| 5" DG               | Takeout Tong Head, with Insert       | Aluminum Cast | 2213250032 |
|                     | Takeout Tong Head, w/o Insert        |               | 2213255200 |
|                     | Takeout Tong Head, with Insert       | Full Aluminum | 2213250015 |
|                     | Takeout Tong Head, w/o Insert        |               | 2213254100 |
| 85mm TG             | Takeout Tong Head, with Insert       | Aluminum Cast | 2213250033 |
|                     | Takeout Tong Head, w/o Insert        |               | 2213255300 |
| 5 ½" DG             | Takeout Tong Head, with Insert       | Aluminum Cast | 2213250034 |
|                     | Takeout Tong Head, w/o Insert        |               | 2213255400 |
| 5 ½" SG & 6 ¼" SG   | Takeout Tong Head, with Insert       | Aluminum Cast | 2213250035 |
|                     | Takeout Tong Head, w/o Insert        |               | 2213255500 |
| 6 ¼" DG             | Takeout Tong Head, with Insert       | Aluminum Cast | 2213250036 |
|                     | Takeout Tong Head, w/o Insert        |               | 2213255600 |
| 4 ¼" TG             | Takeout Tong Head, with Insert       | Aluminum Cast | 2213250037 |
|                     | Takeout Tong Head, w/o Insert        |               | 2213255700 |
|                     | Takeout Tong Head, with Insert       | Full Aluminum | 2213250014 |
|                     | Takeout Tong Head, w/o Insert        |               | 2213254000 |
| 95mm QG             | Takeout Tong Head, with Insert       | Aluminum Cast | 2213250038 |
|                     | Takeout Tong Head, w/o Insert        |               | 2213255800 |
| All Sizes           | Takeout Insert, Type Antiwink        | -             | 2101136000 |
| 5 1/2" DG & 6 ¼" DG | Additional Cooling Takeout Tong Head | -             | 2213253000 |
| 4 ¼" TG             | Additional Cooling Takeout Tong Head | -             | 2213253100 |
| 4 ¼" DG & 5" DG     | Additional Cooling Takeout Tong Head | -             | 2213253200 |