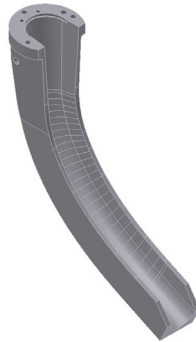


SECTION 1.

DELIVERY SYSTEM

SCOOPS SET – SG



H92			
Size	Material	6 to 12 Sections Part No. (Set)	Mounting Kit
2	Precision casting grey iron	2206190020	on GD Type 2170 and 2171
2 – 3	Precision casting grey iron	2206190016	
3	Precision casting grey iron	2206190015	

Loadmaster – SpeedLine			
Size	Material	6 to 12 Sections Part No. (Set)	Mounting kit
3	Precision casting grey iron	2206190015	On GD Type 2171

SCOOPS SET – SG+



H92			
Size	Material	6 Sect. to 12 Sect. Part No. (Set)	Mounting Kit
4	Aluminum alloy	2206190022	On GD Type 2171
5	Aluminium alloy	2206190040	

Loadmaster – SpeedLine			
Size	Material	6 to 12 Sections Part No. (Set)	Mounting kit
4	Aluminium alloy	2206190022	On GD Type 2171
5	Aluminium alloy	2206190040	

SCOOPS SET – DG



H92			
Size	Material	6 to 12 Sect. Part No. (Set)	Centering Sleeve required?
0	Sheet metal stainless steel	2206190001	Yes
0 – 1 ½	Sheet metal stainless steel	2206190002***	Yes
	Precision casting gray iron	2206190005	Yes
	Precision casting stainless steel	2206190006	Yes
0 – 2	Sheet metal stainless steel	2206190012***	No
2	Sheet metal stainless steel	2206190003	No
	Precision casting gray iron	2206190007	No
	Precision casting stainless steel	2206190008	No
2 – 3	Sheet metal stainless steel	2206190021**	No
	Sheet metal stainless steel	2206190004**	No
	Precision casting gray iron	2206190009	No
	Precision casting stainless steel	2206190010	No
3	Sheet metal stainless steel	2206190035	No
	Precision casting gray iron	2206190014	No
	Precision casting stainless steel	2206190019	No

Loadmaster – SpeedLine			
Size	Material	6 to 12 Sect. Part No. (Set)	Centering Sleeve required?
0	Sheet metal stainless steel	2206190001	Yes
	Sheet metal stainless steel	2206190036	Yes
0 – 1 ½	Sheet metal stainless steel	2206190002***	Yes
	Precision casting gray iron	2206190005	Yes
0-2	Sheet metal stainless steel	2206190012***	No
2	Sheet metal stainless steel	2206190003	No
	Precision casting gray iron	2206190007	No
2-3	Sheet metal stainless steel	2206190021	No
	Precision casting gray iron	2206190009	No
3	Sheet metal stainless steel	2206190035	No
	Precision casting gray iron	2206190014	No

**no use of Scoop 2206190004 since 07-2013 – only use of Scoop 2206190021

***no use of Scoop 2206190002 since 04-2017 – only use of Scoop 2206190012

SCOOPS SET – TG



H92				
Size	Material	6 Sect. Part No. (Set)	8 & 10 Sect. Part No. (Set)	12 Sect. Part No. (Set)
0	Sheet metal stainless steel ***	-	2206190037	2206190037
0 – 1 ½	Sheet metal (hose)	-	2206190026 **	2206190028 **
	Sheet metal stainless steel ***	-	2206190011	2206190023
0-2	Sheet metal stainless steel ***	-	2206190038	2206190038
2	Sheet metal (hose)	-	2206190027 **	2206190029 **
	Sheet metal stainless steel ***	-	2206190018	2206190024
2 – 3	Sheet metal (hose)	-	2206190030	2206190030
	Sheet metal stainless steel ***	-	-	2206190025

Loadmaster – SpeedLine		
Size	Material	6 to 12 Sections Part No. (Set)
0	Sheet metal stainless steel ***	2206190037
0 – 1	Sheet metal (hose)	2206190039
0 – 1 ½	Sheet metal (hose)	2206190028
0-2	Sheet metal (hose)	2206190038
2	Sheet metal (hose)	2206190029
2-3	Sheet metal (hose)	2206190030

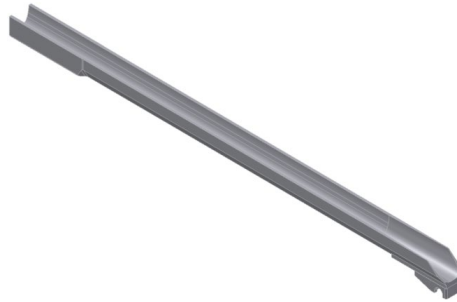
** Use 2206190026 & 2206190027 only for 8 & 10 section machines until 05-2011. After 05-2011 use scoop set 2206190028 & 2206190029 also for 8 & 10 section machines.

*** No use of Scoops with the material Sheet metal stainless steel since 05-2011, only use of sheet metal with hose



Loadmaster – SpeedLine – UNI I-III		
Size	Material	6 to 12 Sections Part No. (Set)
UNI I	-	-
UNI II	Precision casting stainless steel hose	2206190048
UNI III	-	-

TROUGHS SET – SG

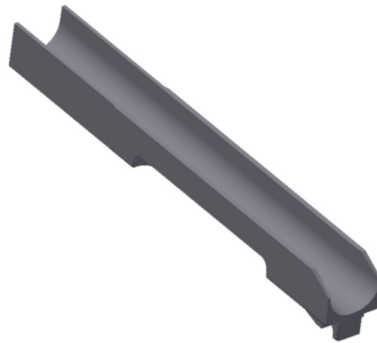


H92				
Size	6 Sect. Part No. (Set)	8 Sect. Part No. (Set)	10 Sect. Part No. (Set)	12 Sect. Part No. (Set)
2	-	-	2206200057	-
2 – 3	-	-	2206200087	-
	-	2206200048**	2206200049 **	-
3	2206200026	2206200047	2206200046	2206200037

Loadmaster - SpeedLine				
Size	6 Sect. Part No. (Set)	8 Sect. Part No. (Set)	10 Sect. Part No. (Set)	12 Sect. Part No. (Set)
0-1	2206200117	2206200115	2206200113	2206200111
¾"	2206200125	2206200123	2206200121	2206200119
0-1 ½"	2206200138	2206200137	2206200136	2206200135
1	2206200133	2206200131	2206200129	2206200127
2	2206200106	2206200105	2206200104	2206200088
2-3	2206200142	2206200141	2206200140	2206200139
3	2206200086	2206200085	2206200084	2206200037

** use material without unmachined cast since 04-2017 , if available

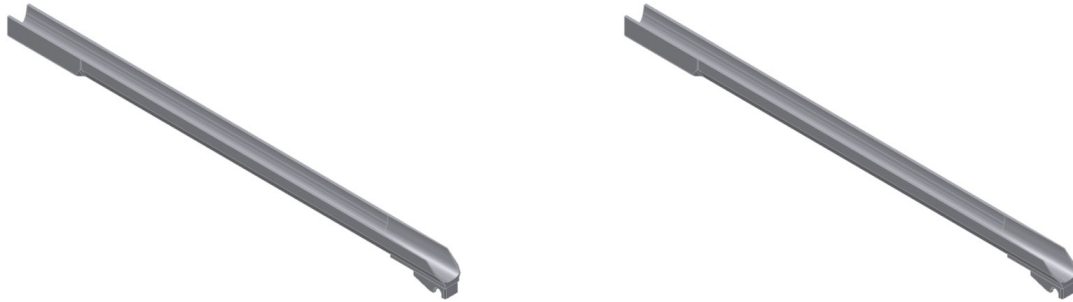
TROUGHS SET – SG+



H92				
Size	6 Sect. Part No. (Set)	8 Sect. Part No. (Set)	10 Sect. Part No. (Set)	12 Sect. Part No. (Set)
4	2206200027	2206200058	2206200044	2206200052
5	2206200028	2206200150	2206200149	2206200148

Loadmaster - SpeedLine				
Size	6 Sect. Part No. (Set)	8 Sect. Part No. (Set)	10 Sect. Part No. (Set)	12 Sect. Part No. (Set)
4	-	-	-	2206200052
5	-	-	-	2206200148

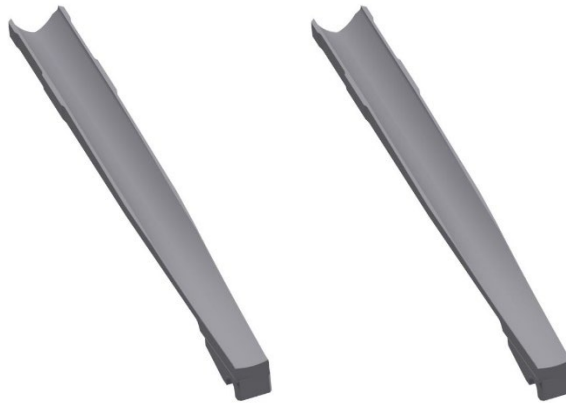
TROUGHS SET – DG



H92				
Size	6 Sect. Part No. (Set)	8 Sect. Part No. (Set)	10 Sect. Part No. (Set)	12 Sect. Part No. (Set)
0	2206200068	2206200004	2206200001	-
0 – 1 ½	2206200067 -	2206200063 2206200014 **	2206200062 -	2206200061 2206200018 **
0 - 2	-	-	2206200146	2206200147
2	2206200071 -	2206200012 2206200005 **	2206200017 -	2206200019 2206200015 **
2 – 3	2206200070 -	2206200054 2206200006 **	2206200055 2206200003 **	2206200056 2206200016 **
3	2206200038	2206200009	2206200010	2206200011

Loadmaster – SpeedLine -Standard				
Size	6 Sect. Part No. (Set)	8 Sect. Part No. (Set)	10 Sect. Part No. (Set)	12 Sect. Part No. (Set)
0-1	2206200118	2206200116	2206200114	2206200112
¾"	2206200126	2206200124	2206200122	2206200120
0 – 1 ½	2206200067	2206200063	2206200062	2206200061
1	2206200134	2206200132	2206200130	2206200128
0 – 2		-	2206200146	2206200147
2	2206200071	2206200012	2206200017	2206200019
2 – 3	2206200070	2206200054	2206200055	2206200056
3	2206200038	2206200009	2206200010	2206200011

** use material without unmachined cast since 07-2017

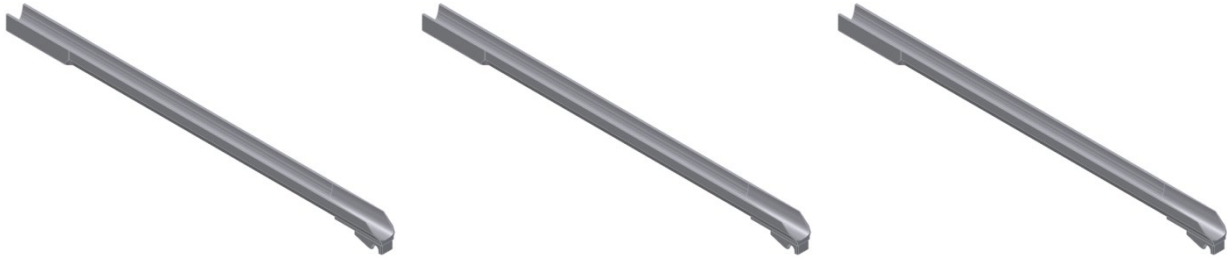


Loadmaster – SpeedLine –UNI I-III**				
Size	6 Sect. Part No. (Set)	8 Sect. Part No. (Set)	10 Sect. Part No. (Set)	12 Sect. Part No. (Set)
UNI I 1/2" - 7/8"	2206200179	2206200177	2206200176	2206200174
UNI II 3/4" - 1 1/2"	2206200164	2206200162	2206200160	2206200158
UNI III 1 3/8" - 2"	2206200172	2206200170	2206200168	2206200166

*UNI Troughs must be combined with the same size of UNI Deflectors

**To achieve optimal results, UNI Trough and UNI Deflectors (in the same size) must be combined

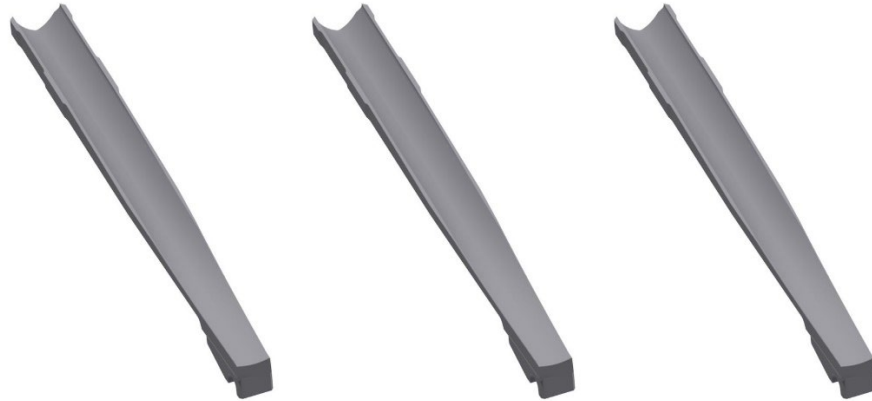
TROUGHS SET – TG



H92				
Size	6 Sect. Part No. (Set)	8 Sect. Part No. (Set)	10 Sect. Part No. (Set)	12 Sect. Part No. (Set)
0	-	2206200029 **	2206200021 **	-
	-	-	-	-
0 – 1 ½	-	2206200066	2206200065	2206200064
	-	-	2206200022 **	-
0 – 2	-	2206200145	2206200144	2206200143
2	-	2206200020	2206200024	2206200059
	-	2206200031 **	2206200023 **	-
2 – 3	-	-	2206200025	2206200060
3	-	-	-	2206200069

Loadmaster – SpeedLine				
Size	6 Sect. Part No. (Set)	8 Sect. Part No. (Set)	10 Sect. Part No. (Set)	12 Sect. Part No. (Set)
0 – 1	2206200098	2206200097	2209200091	2206200090
3/4	2206200101	2206200100	2206200094	2206200096
1	2206200103	2206200102	2206200092	2206200093
0 – 1 ½	2206200073	2206200066	2206200065	2206200064
0 – 2	-	2206200145	2206200144	2206200143
2	2206200074	2206200020	2206200024	2206200059
2 – 3	2206200075	2206200072	2206200025	2206200060
3	2206200109	2206200108	2206200107	2206200069

** use material without unmachined cast since 04-2017



Loadmaster – SpeedLine –UNI I-III**				
Size	6 Sect. Part No. (Set)	8 Sect. Part No. (Set)	10 Sect. Part No. (Set)	12 Sect. Part No. (Set)
UNI I 1/2" - 7/8"	2206200180	2206200178	2206200157	2206200175
UNI II 3/4" - 1 1/2"	2206200165	2206200163	2206200161	2206200159
UNI III 1 3/8" - 2"	2206200173	2206200171	2206200169	2206200167

*UNI Troughs must be combined with the same size of UNI Deflectors

**To achieve optimal results, UNI Trough and UNI Deflectors (in the same size) must be combined

DEFLECTOR SET – SG



H92 – 6 ¼" Machine

Size	6 Sect. Part No. (Set)	8 Sect. Part No. (Set)	10 Sect. Part No. (Set)	12 Sect. Part No. (Set)
1 ½"	-	2206260024	2206260023	2206260022
1 ⅝"	-	2206260021	2206260020	2206260019
1 ¾"	-	2206260018	2206260017	2206260016
1 ⅞"	-	2206260015	2206260014	2206260013
2"	-	2206260012	2206260011	2206260010
Holder Set 6 ¼"	-	2206142100	2206142000	2206142200

H92 – 5" Machine

Size	6 Sect. Part No. (Set)	8 Sect. Part No. (Set)	10 Sect. Part No. (Set)	12 Sect. Part No. (Set)
1 ⅜"	-	-	2206250032	2206270047
1 ½"	-	2206250075	2206250076	2206270050
1 ⅝"	-	2206250071	2206250065	-
1 ¾"	2206250069	2206250072	2206250066	2206270049
1 ⅞"	-	2206250073	2206250067	-
2"	2206250035	2206250074	2206250068	-
Holder Set 5"	2206141200	2206141100	2206141000	2206141300

Loadmaster – SpeedLine				
Size	6 Sect. Part No. (Set)	8 Sect. Part No. (Set)	10 Sect. Part No. (Set)	12 Sect. Part No. (Set)
5/8"	2206270103	2206270101	2206270098	2206270096
3/4"	2206270111	2206270109	2206270107	2206270105
7/8"	2206270116	2206270115	2206270114	2206270113
1	2206270120	2206270119	2206270118	2206270117
1 1/8"	2206270124	2206270123	2206270122	2206270121
1 1/4"	2206270083	2206270082	2206270081	2206270071
1 3/8"	2206270088	2206270086	2206270084	2206270068
1 1/2"	2206270059	2206270058	2206270057	2206270052
1 5/8"	2206270131	2206270129	2206270127	2206270125
1 3/4"	2206270095	2206270094	2206270093	2206270069
1 7/8"	2206270154	2206270151	2206270148	2206270145
2"	2206270056	2206270055	2206270054	2206270053

DEFLECTOR SET – SG+



Figure 1 with Adap.Set

Figure 2 without Adap. Set

H92 – 6 ¼" Machine				
Size	6 Sect. Part No. (Set)	8 Sect. Part No. (Set)	10 Sect. Part No. (Set)	12 Sect. Part No. (Set)
2 1/8"	2206260074	2206260073	2206270070	2206260072
2 ¼"	2206260047	2206260046	2206260045	2206260044
2 ½"	2206260043	2206260042	2206260041	2206260040
2 ¾"	2206260033	2206260032	2206260031	2206260030
Adap.Set 2 ¼"-2 ¾"	2206250096**	2206250094**	2206250093**	2206250092**
Holder Set 2 1/8"	-	-	-	-
Hold. Set 2 ¼"-2 ¾"	-	-	-	2206151200

H92 – 5" Machine				
Size	6 Sect. Part No. (Set)	8 Sect. Part No. (Set)	10 Sect. Part No. (Set)	12 Sect. Part No. (Set)
2 1/8"	2206260062	2206260075	2206270051	2206270045
2 ¼"	2206260060	2206260078	2206260077	2206260076
2 ½"	2206260061	2206260081	2206260080	2206260079
2 ¾"	2206260071	2206260084	2206260083	2206260082
Adap.Set 2 ¼"-2 ¾"	2206250096**	2206250094**	2206250093**	2206250092**
Holder Set 2 1/8"	-	-	-	2206151000
Hold. Set 2 ¼"- 2 ¾"	-	-	-	-

Loadmaster – SpeedLine 6 ¼” Machine				
Size	6 Sect. Part No. (Set)	8 Sect. Part No. (Set)	10 Sect. Part No. (Set)	12 Sect. Part No. (Set)
2 1/8”	2206260050	2206260049	2206260048	2206260034
2 ¼”	2206260004	2206260003	2206260002	2206260001
2 ½”	2206260008	2206260007	2206260006	2206260005
2 ¾”	2206260010	2206260109	2206260108	2206260009
Adap.Set 2 ¼”-2 ¾”	2206250096**	2206250094**	2206250093**	2206250092**
Holder Set 2 1/8”	-	-	-	2206151300
Hold. Set 2 ¼”-2 ¾”	-	-	-	2206151400

Loadmaster – SpeedLine 5” Machine				
Size	6 Sect. Part No. (Set)	8 Sect. Part No. (Set)	10 Sect. Part No. (Set)	12 Sect. Part No. (Set)
2 1/8”	2206260057	2206260056	2206260055	2206260039
2 ¼”	2206260054	2206260053	2206260052	2206260051
2 ½”	2206260038	2206260037	2206260036	2206260035
2 ¾”	2206260059	2206260058	2206250043	2206250042
Adap.Set 2 ¼”-2 ¾”	2206250096**	2206250094**	2206250093**	2206250092 **
Holder Set 2 1/8”	-	-	-	-
Hold. Set 2 ¼”-2 ¾”	-	-	-	2206151100

** only use with Trough Size 4, no use with Trough Size 5

DEFLECTOR SET – DG



H92				
Size	6 Sect. Part No. (Set)	8 Sect. Part No. (Set)	10 Sect. Part No. (Set)	12 Sect. Part No. (Set)
5/8"	-	2206250022	2206250027	-
3/4"	2206250090	2206250023	2206250028	-
7/8"	2206250091	2206250008	2206250001	2206250078
1"	2206250034	2206250009	2206250002	2206250077
1 1/8"	2206260025	2206250010	2206250003	2206250036
1 1/4"	2206260026	2206250011	2206250004	2206250037
1 3/8"	2206260028	2206250012	2206250005	2206250038
1 1/2"	2206260027	2206250013	2206250006	2206250039
1 5/8"	-	2206250014	2206250007	2206250040
1 3/4"	2206250102	2206250024	2206250029	2206250041
1 7/8"	-	2206250025	2206250030	2206250079
2"	-	2206250026	2206250031	-

Loadmaster – SpeedLine				
Size	6 Sect. Part No. (Set)	8 Sect. Part No. (Set)	10 Sect. Part No. (Set)	12 Sect. Part No. (Set)
5/8"	2206270104	2206270102	2206270099	2206270097
3/4"	2206270112	2206270110	2206270108	2206270106
7/8"	2206270034	2206270023	2206270012	2206270007
1"	2206270035	2206270024	2206270013	2206270003
1 1/8"	2206270036	2206270025	2206270014	2206270002
1 1/4"	2206270037	2206270026	2206270015	2206270001
1 3/8"	2206270038	2206270027	2206270016	2206270006
1 1/2"	2206270039	2206270028	2206270017	2206270005
1 5/8"	2206270040	2206270029	2206270018	2206270008
1 3/4"	2206270041	2206270030	2206270019	2206270004
1 7/8"	2206270155	2206270152	2206270149	2206270146
2"	2206270143	2206270141	2206270139	2206270137



Loadmaster – SpeedLine –UNI I-III*+**				
Size	6 Sect. Part No. (Set)	8 Sect. Part No. (Set)	10 Sect. Part No. (Set)	12 Sect. Part No. (Set)
UNI I 1/2" - 7/8"	2206260106	2206260104	2206260103	2206260101
UNI II 3/4" - 1 1/2"	2206260090	2206260088	2206260086	2206260089
UNI III 1 3/8" - 2"	2206260097	2206260095	2206260093	2206260099

*UNI Deflectors must be combined with the same size of UNI Troughs

**To achieve optimal results, UNI Trough and UNI Deflectors (in the same size) must be combined

DEFLECTOR SET – TG



H92				
Size	6 Sect. Part No. (Set)	8 Sect. Part No. (Set)	10 Sect. Part No. (Set)	12 Sect. Part No. (Set)
5/8"	-	2206250057	2206250044	-
3/4"	-	2206250058	2206250045	2206270046
7/8"	-	2206250059	2206250046	2206250015
1"	-	2206250060	2206250047	2206250100
1 1/8"	-	2206250061	2206250048	2206250052
1 1/4"	-	2206250062	2206250049	2206250053
1 3/8"	-	2206250063	2206250050	-
1 1/2"	-	2206250064	2206250051	-

Loadmaster – SpeedLine				
Size	6 Sect. Part No. (Set)	8 Sect. Part No. (Set)	10 Sect. Part No. (Set)	12 Sect. Part No. (Set)
5/8"	2206270075	2206270074	2206270073	2206270072
3/4"	2206270077	2206270076	2206270063	2206270046
7/8"	2206270079	2206270078	2206270067	2206270066
1"	2206270042	2206270031	2206270020	2206270009
1 1/8"	2206270043	2206270032	2206270021	2206270010
1 1/4"	2206270044	2206270033	2206270022	2206270011
1 3/8"	2206270089	2206270087	2206270085	2206270048
1 1/2"	2206270092	2206270091	2206270080	2206270090
1 5/8"	2206270132	2206270130	2206270128	2206270126
1 3/4"	2206270136	2206270135	2206270134	2206270133
1 7/8"	2206270156	2206270153	2206270150	2206270147
2"	2206270144	2206270142	2206270140	2206270138



Loadmaster – SpeedLine –UNI I-III*+**				
Size	6 Sect. Part No. (Set)	8 Sect. Part No. (Set)	10 Sect. Part No. (Set)	12 Sect. Part No. (Set)
UNI I 1/2"- 7/8"	2206260107	2206260105	2206260070	2206260102
UNI II 3/4"- 1 1/2"	2206260091	2206260100	2206260087	2206260085
UNI III 1 3/8"-2"	2206260098	2206260096	2206260094	2206260092

*UNI Deflectors must be combined with the same size of UNI Troughs

**To achieve optimal results, UNI Trough and UNI Deflectors (in the same size) must be combined