

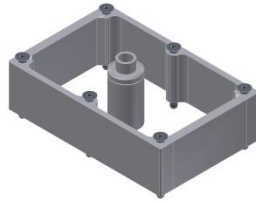
SECTION 3.

BLOW MOULD COOLING

BLOW MOULD COOLING – 4 1/4” CD DG VERTICAL AIR STREAM (VAS) WITH V-INSERT DG CPL. WITH BOTTOM PLATE



Vertical Air Stream



Installation kit



Conversion kit

Description	Part No.
VAS 4 1/4” DG - V-insert (incl. Butterfly valve)	2214110040
VAS 4 1/4” DG - V-insert – direct flow (incl. Butterfly valve)	2214110046
VAS 4 1/4” DG - V-insert – direct flow (without Butterfly valve)	2214110052
Installation kit SG 70 mm	2214122800
Conversion kit 4 1/4” SG	2214110015

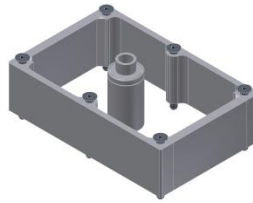
Height Adjustment and Spacer on request

BLOW MOULD COOLING – 5” SG

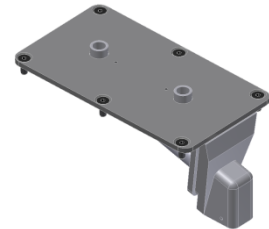
VERTICAL AIR STREAM (VAS) WITH V-INSERT SG CPL. WITH BOTTOM PLATE



Vertical Air Stream



Installation kit



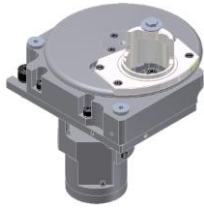
Conversion kit

Description	Part No.
VAS 5” SG - V-insert (incl. Butterfly valve)	2214110013
Installation kit SG 70 mm	2214122800
Conversion kit 5” SG to 5” DG	2214110014

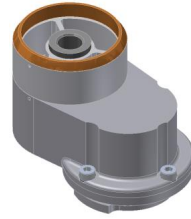
Height Adjustment and Spacer on request

BLOW MOULD COOLING – 5” CD DG

AXIAL MOULD COOLING (AC) EQUIPPED WITH BALL BEARINGS



Air supply
(ball bearing)

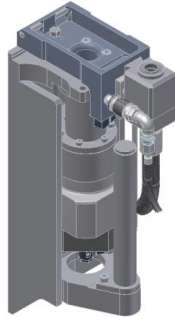


Air supply channel

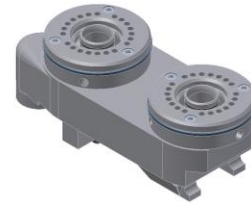
Description	Part No.
Air supply RH (cpl. with intermit. Valve)	2101418700
Air supply LH (cpl. with intermit. Valve)	2101418800
Air supply channel	2101416600
Air supply channel 1”	2101416900
Air supply channel 1 ¼”	2101416700

BLOW MOULD COOLING – 5” CD DG

AXIAL MOULD COOLING (AC) BLOW MOULD BOTTOM MECHANISM WITH BOTTOM ADAPTER



Blow mould bottom mechanism



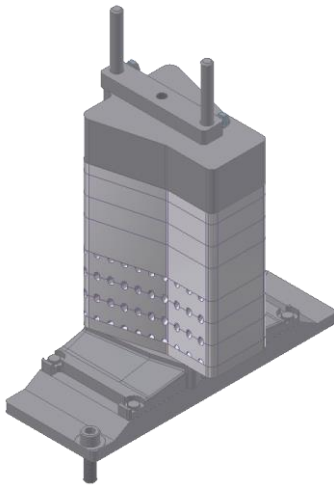
Blow mould bottom adapter

Description	Part No.
AC blow mould bottom mechanism*	2101400800
Blow mould bottom adapter axial	2101400600

*2101400200 for non-Speedline IS-Machine

BLOW MOULD COOLING – 5” CD DG

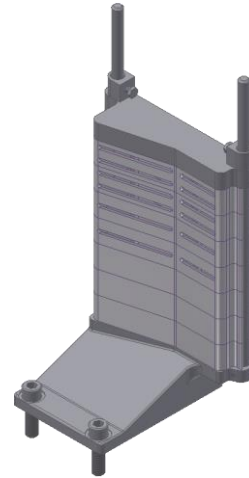
STACK COOLING RADIAL WITH SEPARATE INTERMITTENT VALVE



Stack Cooling
blank & blow-side stack pcs



Intermit. Valve

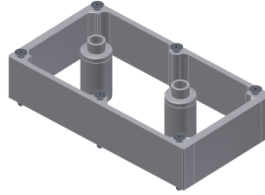


Stack Cooling
for assortment

Description	Part No.
Cooling unit for 6 sections	2106218900
Cooling unit for 8 sections	2108218900
Cooling unit for 10 sections	2110218900
Cooling unit for 12 sections	2112218900
Intermit. Valve RH	2101216100
Intermit. Valve LH	2101216000
Stack cooling for 1 section (LH & RH) for assortment production	215F214200

BLOW MOULD COOLING – 5” CD DG**VERTICAL AIR STREAM (VAS) WITH V-INSERT DG CPL. WITH BOTTOM PLATE**

Vertical Air Stream



Installation kit



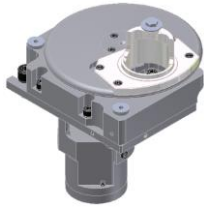
Conversion kit

Description	Part No.
VAS 5” DG - V-insert (incl. Butterfly valve)	2214110041
VAS 5” DG - V-insert – direct flow (incl. Butterfly valve)	2214110047
VAS 5” DG - V-insert – direct flow (without Butterfly valve)	2214110053
Installation kit 70 mm	2214122600
Conversion kit 5“ DG to 5” SG	2214110025
Conversion kit 5” DG to 4 ¼” SG	2214110015

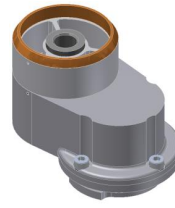
Height Adjustment and Spacer on request

BLOW MOULD COOLING – 5 1/2” CD DG

AXIAL MOULD COOLING (AC) EQUIPPED WITH BALL BEARINGS



Air supply
(ball bearing)

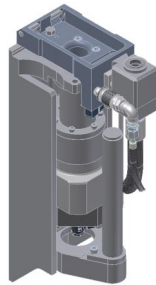


Air supply channel

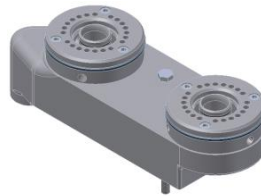
Description	Part No.
Air supply RH (cpl. with intermitt. valve)	2102416400
Air supply LH (cpl. with intermitt. valve)	2102416500
Air supply RH (cpl. with intermitt. Valve, optimized mounting plate)	2102416800
Air supply LH (cpl. with intermitt. Valve, optimized mounting plate)	2102416900
Air supply channel	2101416600
Air supply channel 1”	2101416900
Air supply channel 1 1/4”	2101416700
Cooling piece	2103412500
Cooling piece	2103412600
Adapter 5“	2103412701
	2103412702
	2103412703

BLOW MOULD COOLING – 5 1/2” CD DG

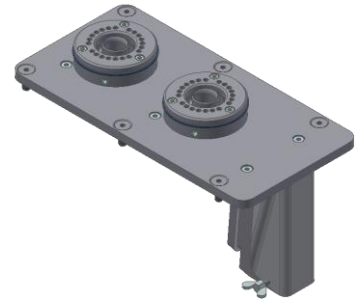
AXIAL MOULD COOLING (AC) BLOW MOULD BOTTOM MECHANISM WITH BOTTOM PLATE ADAPTER



Blow mould bottom mechanism



Blow mould bottom adapter



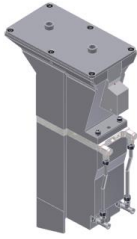
Conversion kit for VAS

Description	Part No.
Blow mould bottom mechanism	2101400800
Blow mould bottom adapter 5 1/2” DG	2103401400
Conversion kit Bottom plate for VAS	2214112300

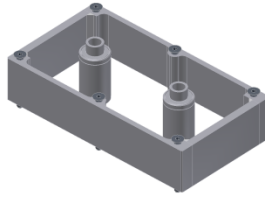
*2101400200 for non-Speedline IS-Machine

BLOW MOULD COOLING – 5 1/2” CD DG

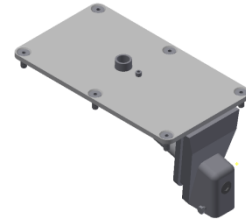
VERTICAL AIR STREAM (VAS) WITH V-INSERT DG CPL. WITH BOTTOM PLATE



Vertical Air Stream



Installation kit



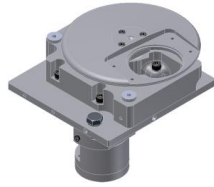
Conversion kit

Description	Part No.
VAS 5 1/2” DG - V-insert (incl. Butterfly-valve)	2214110042
VAS 5 1/2” DG - V-insert – direct flow (incl. Butterfly valve)	2214110048
VAS 5 1/2” DG - V-insert – direct flow (without Butterfly valve)	2214110054
Installation kit 70 mm DG	2214122700
Conversion kit 5 1/2” DG to SG	2214110026

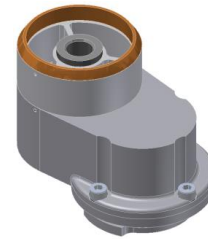
Height Adjustment and Spacer on request

BLOW MOULD COOLING – 6 ¼” CD DG

AXIAL MOULD COOLING (AC) EQUIPPED WITH BALL BEARINGS



Air supply

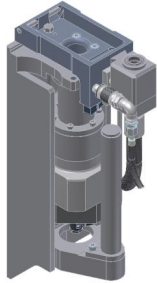


Air supply channel

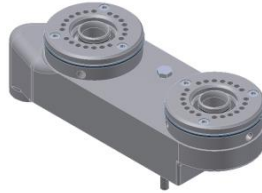
Description	Part No.
Air supply RH (cpl. with intermitt. valve)	2102416400
Air supply LH (cpl. with intermitt. valve)	2102416500
Air supply RH (cpl. with intermitt. Valve, optimized mounting plate)	2102416800
Air supply LH (cpl. with intermitt. Valve, optimized mounting plate)	2102416900
Air supply channel	2101416600
Air supply channel 1”	2101416900
Air supply channel 1 ¼”	2101416700
Cooling Piece for 6 ¼” Moulds	2102412500
Adapter for 5” Moulds	2102414000
Mounting Parts	2102418200
Blow mould holder with cooling piece holder	2102412900

BLOW MOULD COOLING – 6 ¼” CD DG

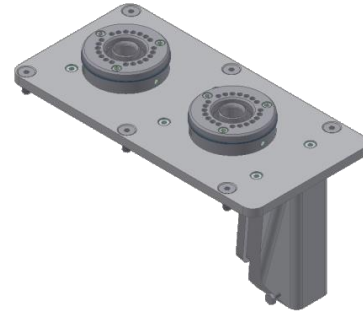
AXIAL MOULD COOLING (AC) BLOW MOULD BOTTOM MECHANISM WITH BOTTOM PLATE ADAPTER



Blow mould bottom mechanism



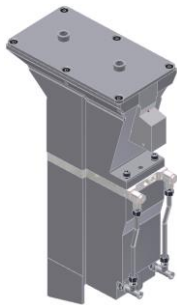
Blow mould bottom adapter



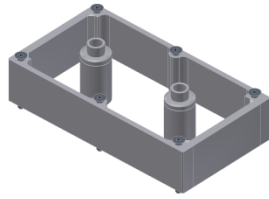
Conversion kit for VAS

Description	Part No.
Blow mould bottom mechanism	2101400800*
Blow mould bottom adapter 6 ¼” DG	2102402000
Conversion kit Bottom plate for VAS	2214112000

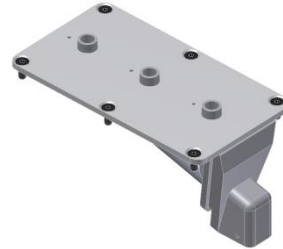
*2101400200 for non-Speedline IS-Machine

BLOW MOULD COOLING – 6 ¼” CD DG**VERTICAL AIR STREAM (VAS) WITH V-INSERT DG CPL. WITH BOTTOM PLATE**

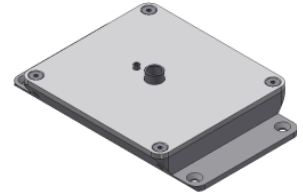
Vertical Air Stream



Installation kit



Conversion kit

SG Conversion kit large
moulds

Description	Part No.
VAS 6 ¼” DG - V-insert (incl. Butterfly valve)	2214110043
VAS 6 ¼” DG - V-insert – direct flow (incl. Butterfly valve)	2214110049
VAS 6 ¼” DG - V-insert – direct flow (without Butterfly valve)	2214110055
Installation kit 70 mm DG	2214122700
Installation kit 70 mm SG	2214122900
Conversion kit 6 ¼” DG to 4 ¼” TG	2214110010
Conversion kit 6 ¼” DG to 6 ¼” SG	2214110027
Conversion kit 6 ¼” SG for 8 ½” (large moulds)	2214124000

Height Adjustment and Spacer on request

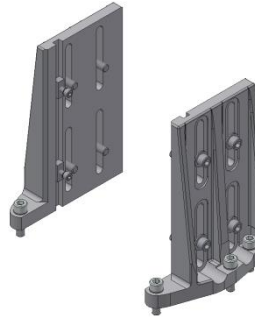
BLOW MOULD COOLING – 6 ¼” DG
360° AXIAL MOULD COOLING



RH



LH



Mounting Kit RH / LH



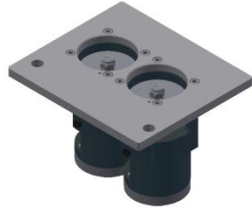
Adapter H=35mm

Description	Part No.
360° Axial Cooling RH with 5” Mould-adapter	2241401000
360° Axial Cooling LH with 5” Mould-adapter	2241401100
Mounting Kit RH / LH	2241400300
Adapter H=35mm	2241401300
360° Axial Cooling Piece 6 ¼”	2241400100

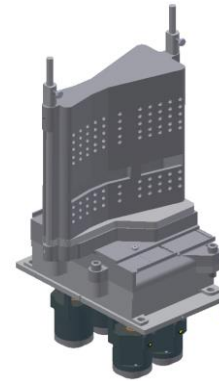
BLOW MOULD COOLING – 6 ¼” CD DG

STACK COOLING RADIAL

Can be used in connection with VAS



Intermittend Valve



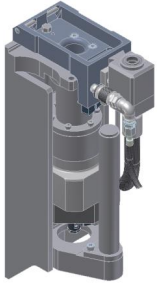
Stack Cooling incl. intern. valves

Description	Part No.
Blow Mould Cooling Intermittend Valve RH	213F212820
Blow Mould Cooling Intermittend Valve LH	213F212810
Blow Mould Cooling Center incl. interm. Valves **for 4 ¼” TG use aswell	213F212800
Blow Mould Cooling RH incl. interm. Valves **for 4 ¼” TG use aswell	213F212900
Blow Mould Cooling LH incl. interm. Valves **for 4 ¼” TG use aswell	213F213000

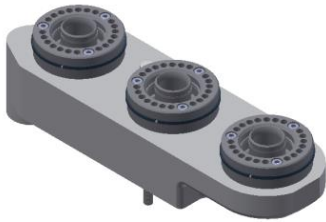
*Air supply can be used with stack cooling SG, DG & TG. Stack pieces can be used on blank mould side aswell.

BLOW MOULD COOLING – 4 ¼” CD TG

AXIAL MOULD COOLING (AC) BLOW MOULD BOTTOM MECHANISM WITH BOTTOM PLATE ADAPTER



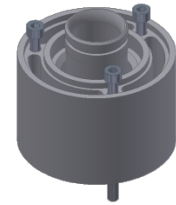
Blow mould bottom mechanism



Blow mould bottom adapter



Conversion kit for VAS



Distance kit

Description	Part No.
Blow mould bottom mechanism	2101400800*
Blow mould bottom adapter 4 ¼” TG	2104401000
Conversion kit for VAS – without bottom cooling (vacuum only)	2104401100
Distance kit 40mm for bottom plate	2104401011

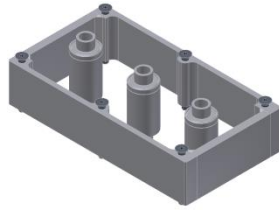
*2101400200 for non-Speedline IS-Machine

BLOW MOULD COOLING – 4 ¼” CD TG

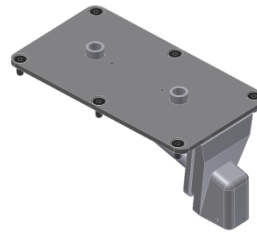
VERTICAL AIR STREAM (VAS) WITH V-INSERT TG CPL. WITH BOTTOM PLATE



Vertical Air Stream



Installation kit



Conversion kit



Conversion kit for VAS

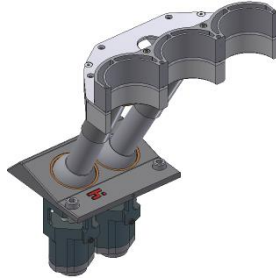
Description	Part No.
VAS 4 ¼” TG - V-insert (incl. Butterfly valve)	2214110044
VAS 4 ¼” TG - V-insert – direct flow (incl. Butterfly valve)	2214110050
VAS 4 ¼” TG - V-insert – direct flow (without Butterfly valve)	2214110056
Conversion kit Bottom plate for VAS – V-Form	2214111800
Conversion kit Bottom plate for VAS – straight-Form	2214112100
Installation kit 70 mm TG	2214122200
Conversion kit 4 ¼” TG to 6 ¼” DG	2214110011

Height Adjustment and Spacer on request

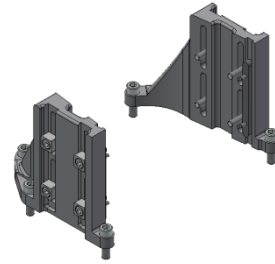
BLOW MOULD COOLING – 4 1/4” CD TG
360° AXIAL MOULD COOLING (AC)



RH



LH



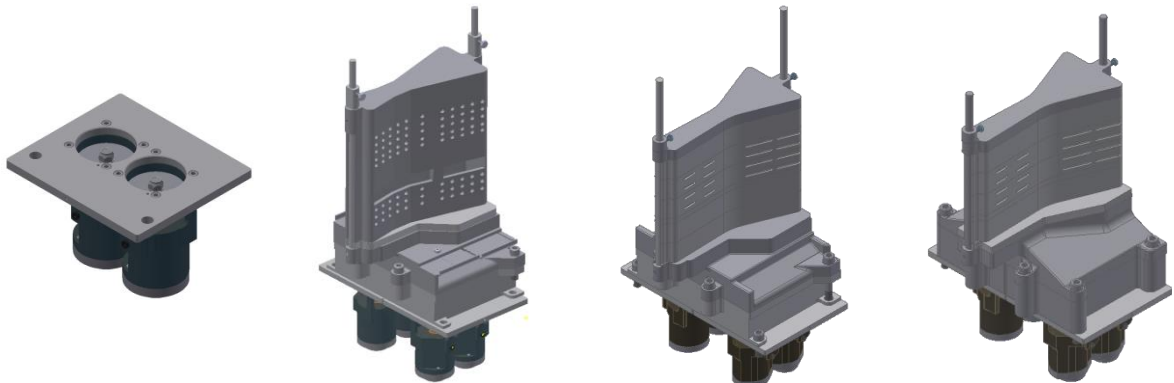
Mounting Kit RH / LH

Description	Part No.
360° Axial Cooling RH	2241300100
360° Axial Cooling LH	2241310100
Mounting Kit RH / LH	2241300240

BLOW MOULD COOLING – 4 1/4” CD TG

STACK COOLING RADIAL

Can be used in connection with VAS



Intermittend Valve

Stack Cooling incl.
interm. Valves**

Stack Cooling incl.
interm. Valves
blank & blow-side
stack pcs (Cast Plate)

Stack Cooling incl.
interm. Valves
blank & blow-side
stack pcs

Description	Part No.
Blow Mould Cooling Intermittend Valve RH	213F212820
Blow Mould Cooling Intermittend Valve LH	213F212810
Blow Mould Stack Cooling Center incl. interm. Valves **for 6 1/4” DG use aswell	213F212800
Blow Mould Stack Cooling RH incl. interm. Valves **for 6 1/4” DG use aswell	213F212900
Blow Mould Stack Cooling LH incl. interm. Valves **for 6 1/4” DG use aswell	213F213000
Blow Mould Stack Cooling Center	2221081900
Blow Mould Stack Cooling RH	2221082000
Blow Mould Stack Cooling LH	2221082100
Blow Mould Stack Cooling Center (Cast Plate)	2221081600
Blow Mould Stack Cooling RH (Cast Plate)	2221081700
Blow Mould Stack Cooling LH (Cast Plate)	2221081800
Blow Mould Stack Cooling Center (Cast Plate) for small moulds	2221081900
Blow Mould Stack Cooling RH (Cast Plate) for small moulds	2221082000
Blow Mould Stack Cooling LH (Cast Plate) for small moulds	2221082100

*Air supply can be used with stack cooling SG, DG & TG. Stack pieces can be used on blank mould side aswell.