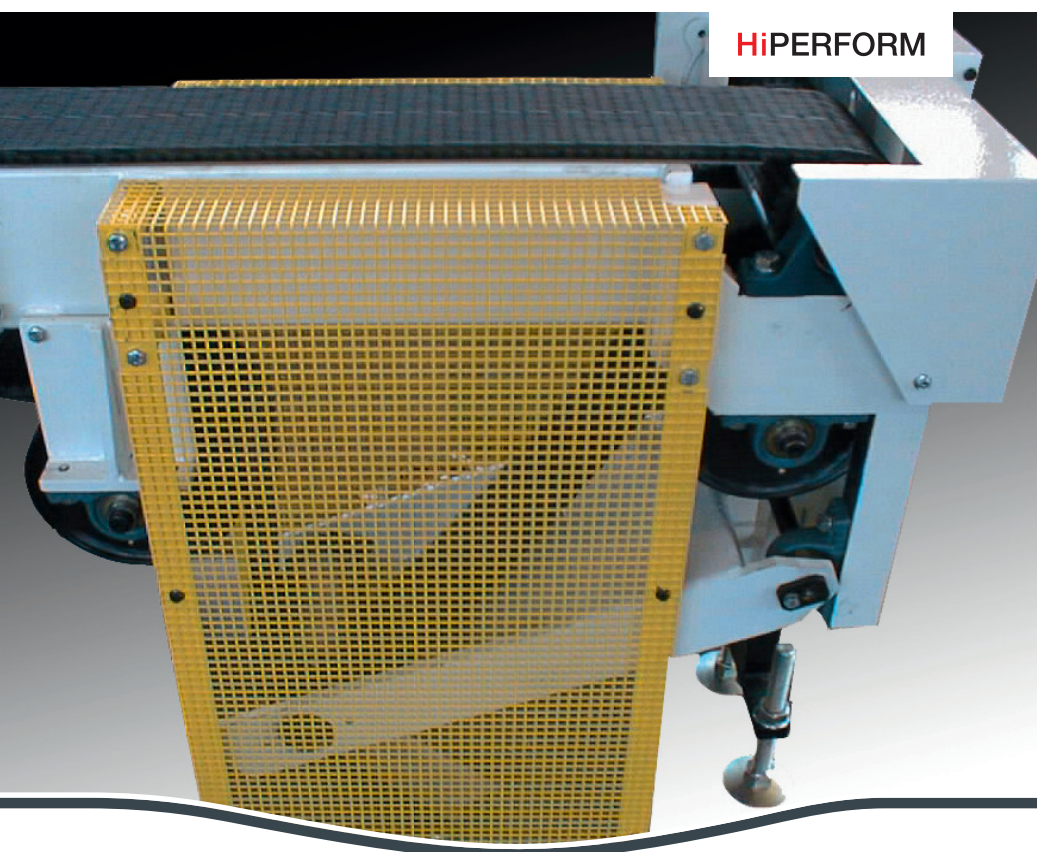


WE ARE GLASS PEOPLE

# TEMPERATURE COMPENSATED **CROSS CONVEYOR**

Type 4216



## THE CROSS CONVEYOR

The production machine continuously delivers articles to the machine conveyor. A deflection unit transfers the articles in defined distances to the Cross Conveyor.

According to the design, the articles are either delivered from the right or from the left.

### Application range

This Cross Conveyor is to be used for lehr belt widths exceeding 3500 mm (smaller lehr belt widths on request).

As transport chain a silent chain with a nominal width of 150 mm (6") is used.

### Function

The return travel of the transport chain is carried beneath the conveyor body in an open slideway. It is formed of wear-resistant metal sheets.

Due to wear (and temperature) the transport chain will get longer. For compensating this elongation the cross conveyor drive is equipped with a plane idler roller (2) which is supported by swivelling arms (3).

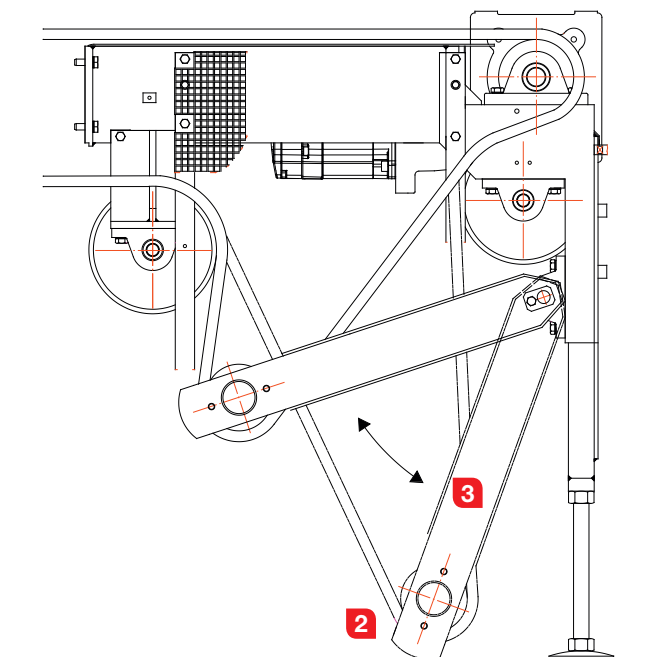
The elongation of the transport chain causes a lowering of the swivelling arms (3). Thus a compensation of approx. 650 mm transport chain elongation is possible at a conveyor height of 1000 mm.

In order to avoid irregularities in run caused by piled-up dirt, the guide pulley of the transport chain return guide (10) should also be a plane type.

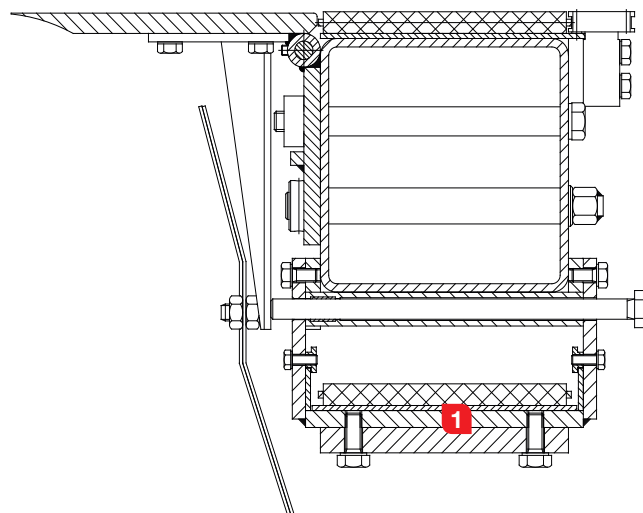
### Temperature compensation by water filling

The conveyor body of the cross conveyor which is installed in front of the lehr opening is made of a thick-walled steel tube. For a better temperature distribution this tube will continuously be flooded with water. In this way an equal temperature will be obtained within the conveyor body, so that it remains nearly free of warp.

Either fresh water or clean circulation water can be used. The water consumption is approx. 30 - 60 liters/minute. If a cross conveyor shall be stored in the open air, the water must be removed in case of frostiness.

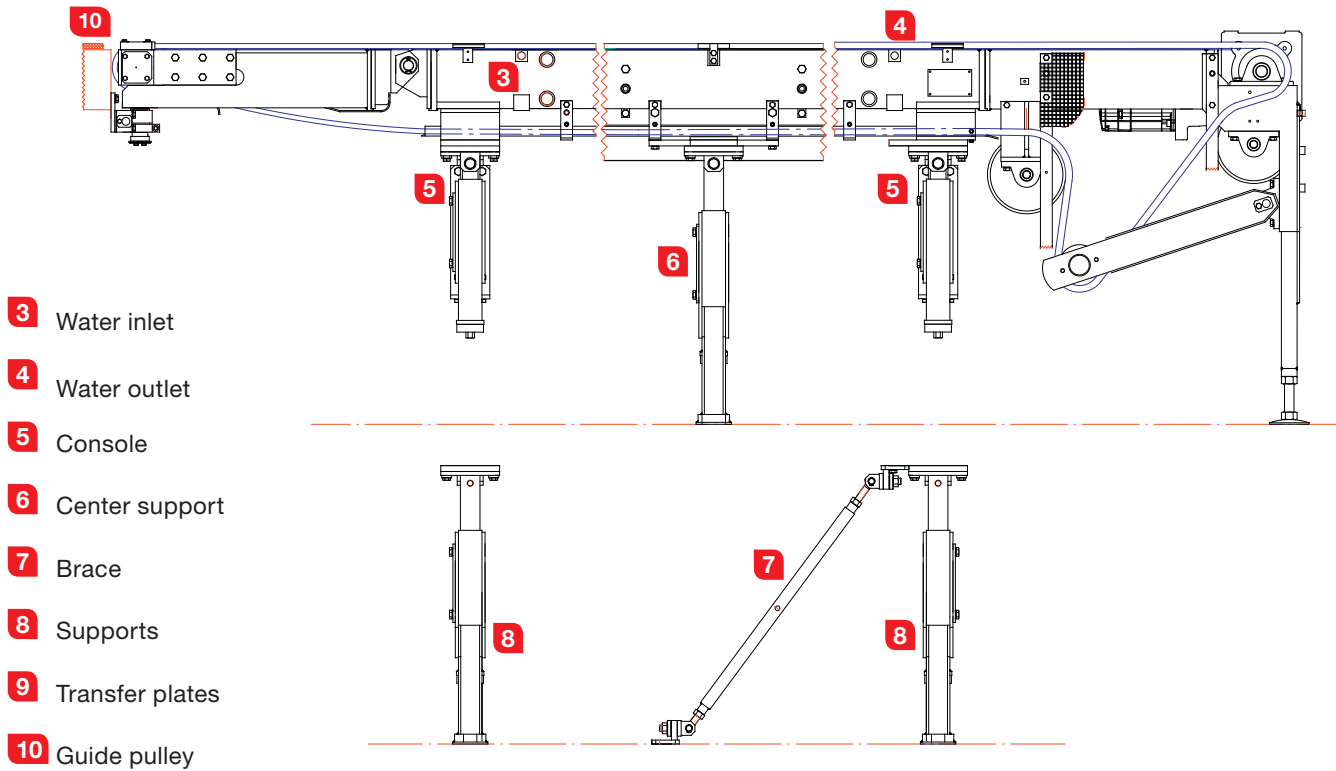


- 1** Metal sheets
- 2** Idler roller
- 3** Swivelling arms



# INSTALLATION

The Cross Conveyor will generally be supplied with consoles which are prepared for lehr mounting. As an option, the conveyor can be prepared for installation on supports.



## Transfer plates

The transfer plates (9) are made of cast iron.

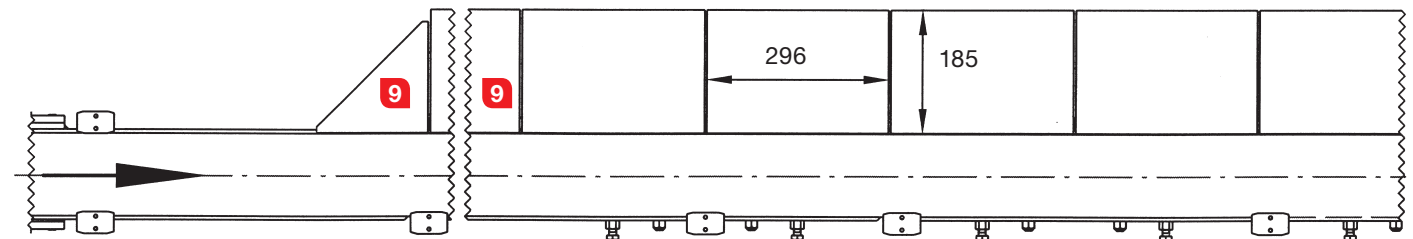
The transfer plates are adjustable :

- in height in conveyor direction
- in inclination

## Drive

As drive a Simotion® servo motor is used. On demand also motors of the size DIN/IEC 112 to 132 can be installed.

For further information please contact us.



# OVERVIEW

## Advantages

- For lehr belt widths >3500 mm
- Compensation of approx. 650 mm transport chain elongation possible
- Available with console prepared for lehr mounting
- Guide pulley of the transport chain return guide designed as plane roller
- Exact adaption of the cross conveyor height to the machine conveyor / ware transfer
- By flooding the conveyor body with water, even at very large lehr widths it remains nearly warp-free

## Technical Data

- Nominal width of transport chain 150 mm
- According to your order the height is adjustable by means of the threaded spindles
  - 760 – 920 mm
  - or 880 – 1040 mm
  - or 1000 – 1160 mm
- Weight according to type up to 1000 kg
- Water connection
  - Inlet = R 1/2"
  - Outlet = R 1/2"
- Water consumption depending on the inlet temperature and lehr width approx. 30-60 l/minute (fresh or clean circulation water)

## Scope of Delivery

- Cross conveyor drive
- Conveyor body with transfer plates
- Center support
- Conveyor deflection
- Intermediate conveyor body
- Two consoles (plus one support for wide lehrs)

## Option

Two supports and one brace instead of both consoles

## Emissions

- The A-weighted permanent sound pressure level of this system is below 70 dB(A)