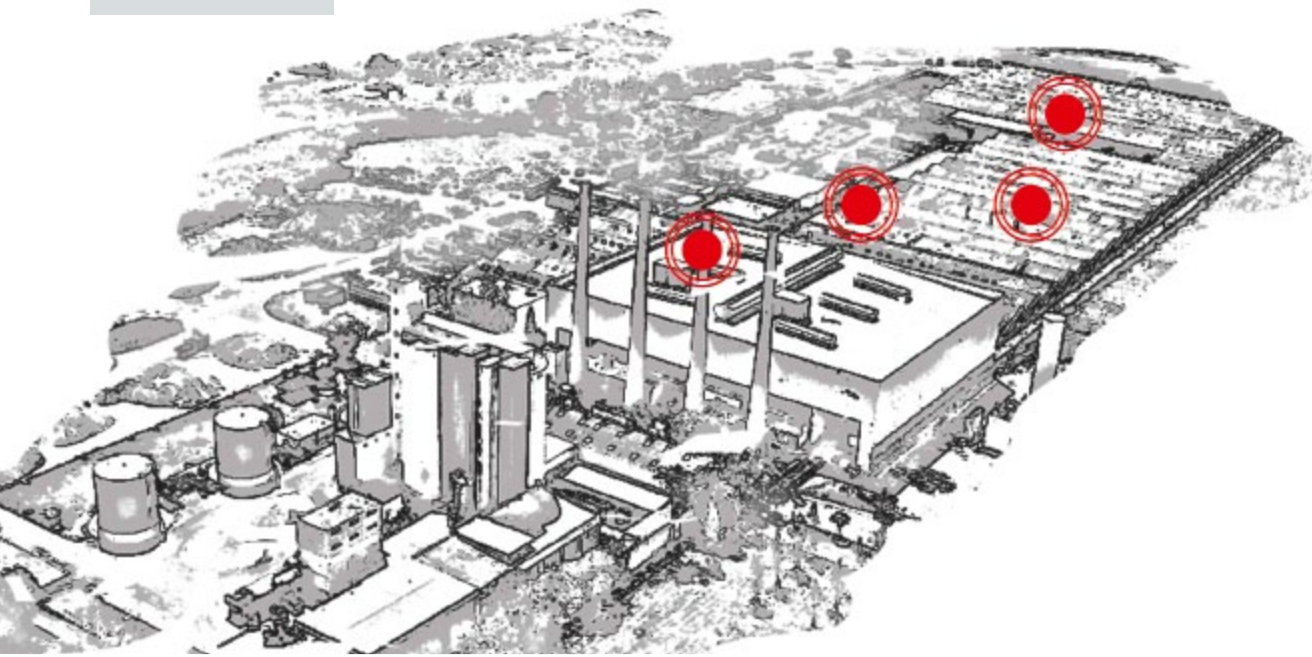


# GET THE OVERVIEW

# HEYE PLANTPILOT

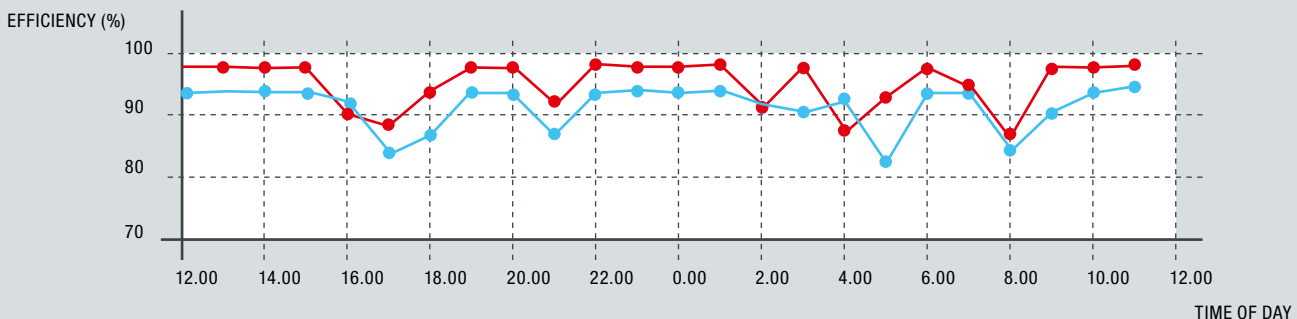
HiSHIELD



WE ARE GLASS PEOPLE

 **heye**  
international

# INTEGRATES DATA FROM HOT AND COLD END

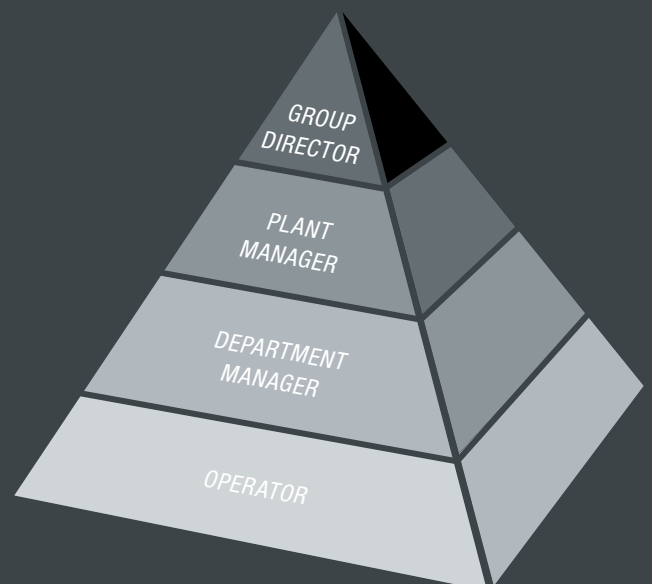


## IMPROVES PLANT PERFORMANCE

Today, boosting efficiency is a key challenge in the glass production industry. In order to optimise decisive cost and performance factors such as PTT (pack to time) or mould lifetimes, you need an overview of all relevant production data.

The Heye PlantPilot is the tool to help group directors, plant managers, department managers and operators keeping their eyes on the maximum plant efficiency.

The powerful information system collects data from both the Hot and Cold End. This important information about the production and inspection process is evaluated and presented in a clearly laid out way. Thus the Heye PlantPilot supports you to achieve the highest quality production, avoiding cost-increasing disturbances.



# INFORMATION TRANSFER

The Heye PlantPilot matches together all relevant production information in real time. As a result, the system gives a complete overview of production performance. The data collected includes such sources as the laboratory, the article counter, inspection machines, the IS-Machines and input added by the operator.

## Dashboard

The dashboard is the central screen of the information system. It is designed to provide the user with all relevant data at a glance. Thumbnails give you a brief overview. The different areas can be expanded for more details.

The efficiency graph function shows you production efficiency for the past 24 hours, split as Hot End and Cold End efficiency. You can check the current status as well as the expected future trend.

Furthermore, the dashboard informs you about defects which are either reported by operators or detected by inspection machines. You get a quick overview of the section status, the inspection machines and rejection rates.

## Maintenance Shop

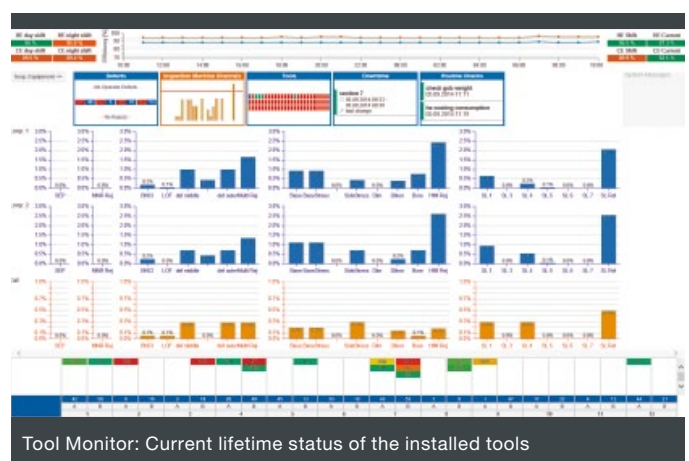
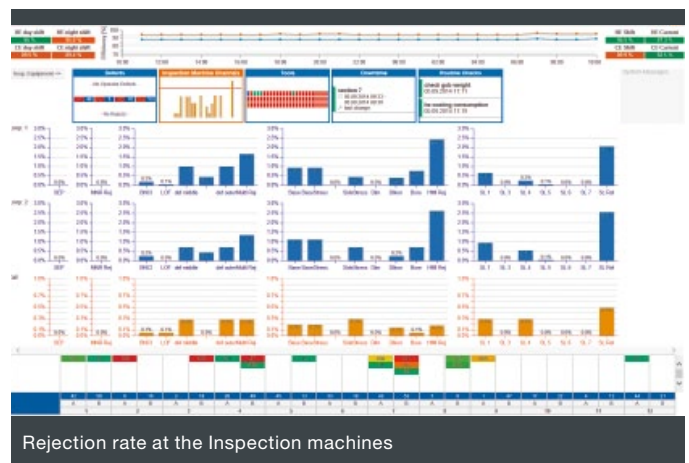
Obtaining precise information about the ideal time of mould, variables and wear part exchanges is a key factor for costs optimisation. The Maintenance shop function helps you to keep an overview of all part lifetimes in order to use them as long as possible, without missing the right moment for replacement.

## Main Rejects

The Main Rejects function offers you an overview of the most frequent rejects in your production process, sorted by value. A very useful tool to define the ideal order of defect corrections.

## Tracking and Tracing

All existing data are safely stored in a database, giving the opportunity to access information for a chosen period. This is helpful for comparisons, as well as providing proof of production quality levels for a certain moment.



## List of Functionalities

- Losses along the line
- Losses per mould
- Worst cavities
- Defect distribution at the IS-Machine
- Main rejects
- Deviation in between inspection loops
- Line sheet
- Efficiency graphs
- Trend graphs
- Different time frames
- Evaluation module
- Standard reports
- Individual reports
- Downtime monitoring
- Routine checks monitor
- Maintenance shop module
- Tool monitoring
- Mould repairs
- Message system between Hot End and Cold End
- Pallet monitoring
- Dashboard
- Access via browser

**Heye International GmbH**  
Lohplatz 1, 31683 Obernkirchen  
Germany

T +49 5724 26 0  
F +49 5724 26 229

[www.hey-international.com](http://www.hey-international.com)

